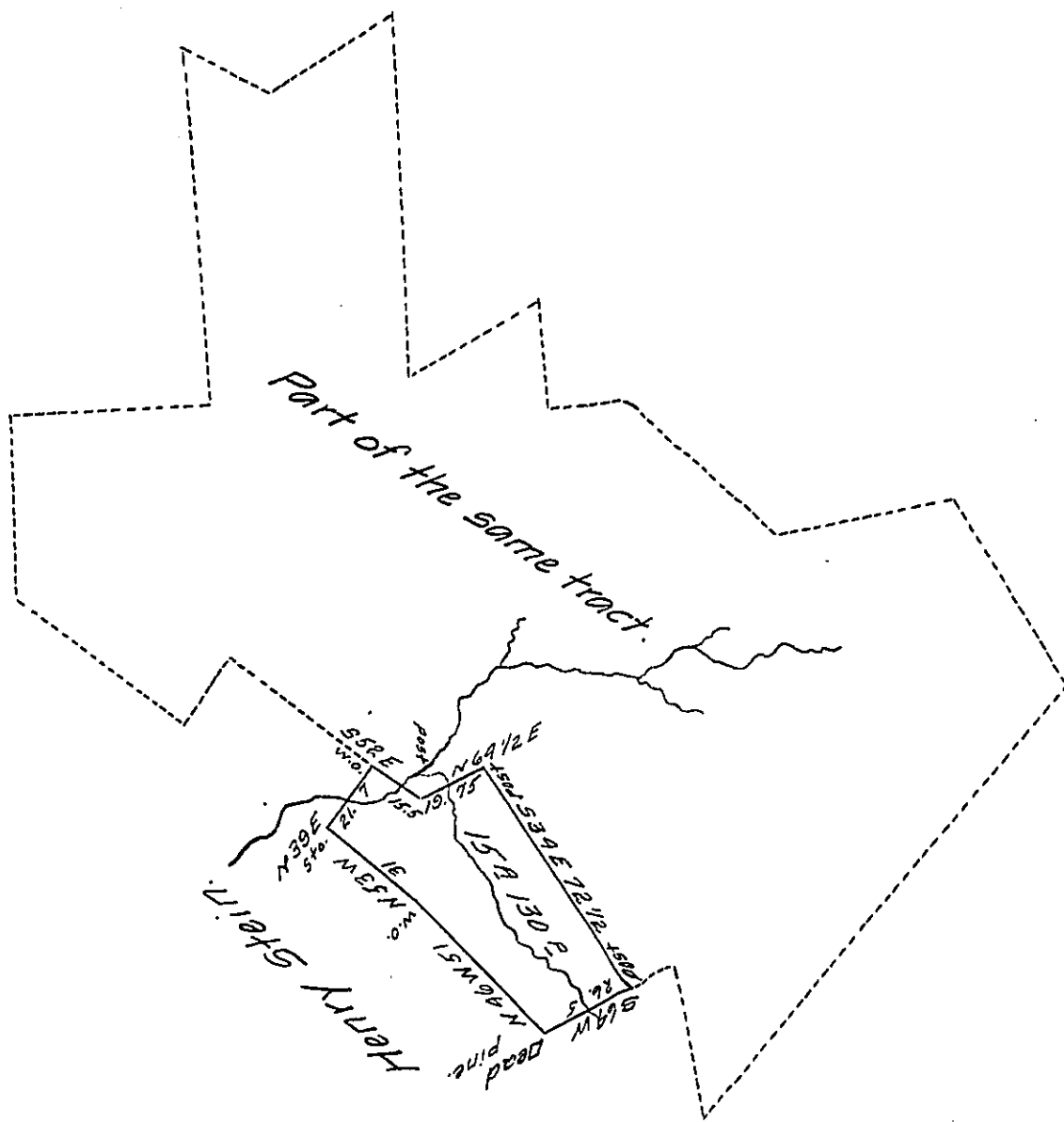


FORM NO. 1.



Situate in Pinegrove township Schuylkill county containing fifteen acres and one hundred and thirty perches and the allowance of six per cent, being part of a larger tract of two hundred and eighteen acres and a quarter originally surveyed on the 8th day of September 1815 in pursuance of a warrant dated the 26th day of April 1815 granted Jacob Zimmerman. Returned this 5th day of March 1829 as the property of Henry Stein at his request.

F. Lauderbrun.

To Gabriel Hiester Esquire

Dep. Sur.

Surveyor General of Penna

Schuylkill —

The improvement on the above consists of about ten acres of cleared land.

IN TESTIMONY that the above is a copy of the original remaining on file in the Department of Internal Affairs of Pennsylvania, made conformably to an Act of Assembly approved the 16th day of February 1833, I have hereunto set my hand and caused the Seal of said Department to be affixed at Harrisburg, this thirty first day of July 1907.

Henry Howell

Secretary of Internal Affairs.